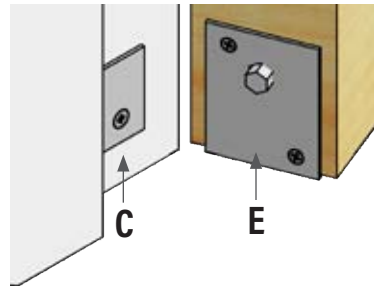
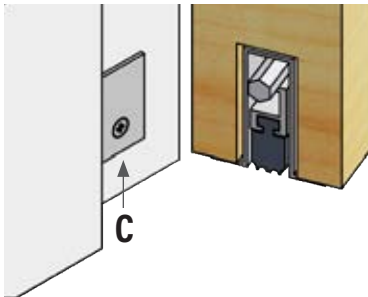
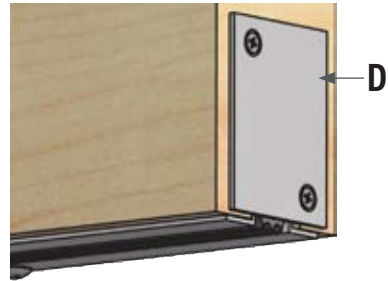
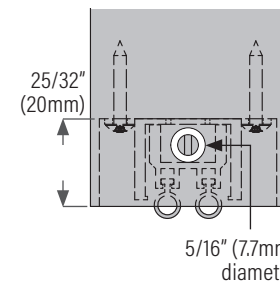
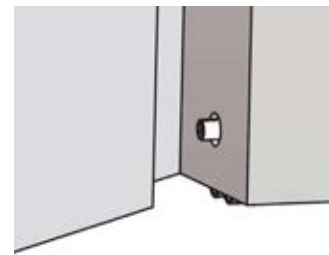


DS336 & DS342



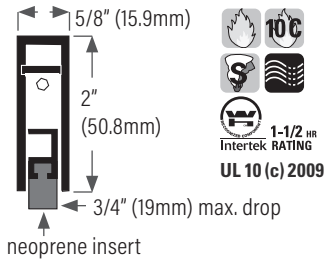
DS344



POSITIVE PRESSURE TESTED GASKETING MATERIALS FOR FIRE DOORS FOR APPLICATION TO HOLLOW-METAL-TYPE FIRE DOORS RATED UP TO 3 HOURS AND WOOD-TYPE FIRE DOORS RATED UP TO 1-1/2 HOURS. CATEGORY H. Smoke and Draft Control gasketing (Category H) tested to UL 1784; meets requirements of NFPA 105, IBC for use on "S" label doors.

DS335

Surface mounted application



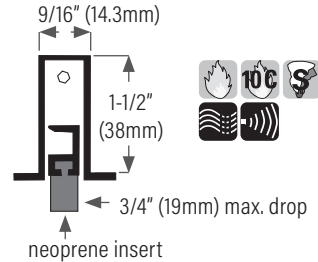
WARNING: Do not pull drop bar out of case unless disengaged from spring or damage will occur and void warranty

INSTALLATION INSTRUCTIONS

- For single doors cut door bottom 1/8" shorter than distance between stops on frame. For pairs cut 1/16" shorter than the distance between stop on frame and meeting edge of door. DO NOT EXTEND DROP BAR WHILE CUTTING. Do not cut from end with adjusting rod. **Maximum cut door bottoms** 25" to 35" (635mm to 889mm) = 2" (51mm). 36" to 48" (914mm to 1219mm) = 4" (102mm). Up to 24" (610mm) = no cut.
- With door closed, position on push side of door with adjusting rod toward hinged edge. Align bottom of case flush with bottom of door and 1/16" clearance at each end, mark screw holes.
- Drill pilot holes for screws using 9/64" drill bit.
- Install with screws provided. Do not over tighten.
- Set adjusting rod for proper seal. To reduce drop, turn adjusting rod right; to increase drop turn left. NOTE: Once hinged end of drop bar makes solid contact, other end will drop. Maximum drop = 3/4".
- On wooden frames, install strike plate on door jamb where adjusting rod makes contact.

DS336

Mortise application



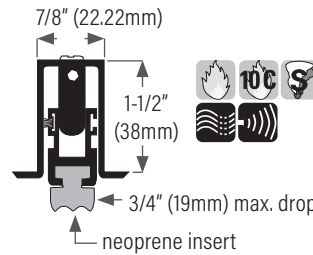
WARNING: Do not pull drop bar out of case unless disengaged from spring or damage will occur and void warranty

INSTALLATION INSTRUCTIONS

- Cut door bottom to exact net width of door. DO NOT EXTEND DROP BAR WHILE CUTTING. Do not cut from end with adjusting rod. **Maximum cut door bottoms** 25" to 35" (635mm to 889mm) = 2" (51mm). 36" to 48" (914mm to 1219mm) = 4" (102mm). Up to 24" (610mm) = no cut.
- Mortise bottom of door on center line 5/8" wide x 1-9/16" deep.
- Position door bottom in mortise with actuator rod toward hinge edge; mark screw holes.
- Drill pilot holes for screws using 5/64" drill bit.
- Install door bottom with adjusting rod at the hinged side of door.
- Set adjusting rod for proper seal. To reduce drop, turn adjusting rod right; to increase drop turn left. NOTE: Once hinged end of drop bar makes solid contact, other end will drop. Maximum drop = 3/4".
- On wooden frames, install strike plate on door jamb where adjusting rod makes contact.

DS342

Mortise application



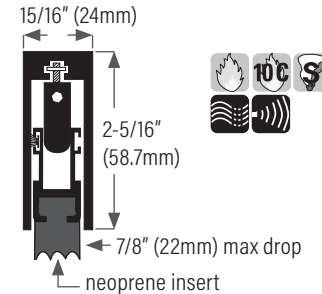
WARNING: Do not pull drop bar out of case unless disengaged from spring or damage will occur and void warranty

INSTALLATION INSTRUCTIONS

- Mortise bottom of door on center line 15/16" wide x 1-5/8" deep.
- Cut door bottom to exact net width of door. DO NOT EXTEND DROP BAR WHILE CUTTING. Insert the (2) nails provided into the small holes on the side of the drop bar to keep drop bar extended while cutting. Do not cut from end with adjusting rod. **Maximum cut door bottoms** 25" to 35" (635mm to 889mm) = 2" (51mm). 36" to 48" (914mm to 1219mm) = 4" (102mm). Up to 24" (610mm) = no cut.
- Position door bottom in mortise with actuator rod toward hinge edge; mark screw holes.
- Drill pilot holes for screws using 5/64" drill bit.
- Install door bottom with adjusting rod at hinged side of door.
- Set adjusting rod for proper seal. To reduce drop, turn adjusting rod right. To increase drop, turn adjusting rod left. Once hinge end of drop bar makes solid contact, other end will drop. MAXIMUM drop = 3/4".
- Install end caps to ends of the door bottom, with screws provided.
- On wooden frames, install strike plate on door jamb where adjusting rod makes contact.

DS343

Surface mounted application



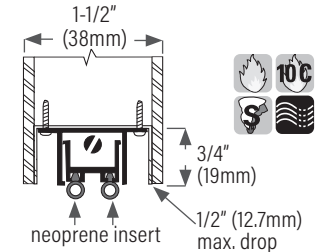
WARNING: Do not pull drop bar out of case unless disengaged from spring or damage will occur and void warranty

INSTALLATION INSTRUCTIONS

- For single doors cut 1/8" shorter than distance between stops on frame. For pairs cut 1/16" shorter than distance between stop on frame and meeting edge of door. - DO NOT EXTEND DROP BAR WHILE CUTTING. Insert (2) nails provided into the small holes on the side of the drop bar to keep drop bar extended while cutting. Do not cut from end with adjusting rod. **Maximum cut door bottoms** 25" to 35" (635mm to 889mm) = 2" (51mm). 36" to 48" (914mm to 1219mm) = 4" (102mm). Up to 24" (610mm) = no cut.
- With door closed, position on push side of door with adjusting rod toward hinge edge. Align bottom of case flush with bottom of door and 1/16" clearance at each end, mark screw holes
- Drill pilot holes for screws using 11/64" drill bit.
- Install with screws provided. DO NOT OVERTIGHTEN.
- Set adjusting rod for proper seal. To reduce drop, turn adjusting rod right. To increase drop, turn adjusting rod left. Once hinge end of drop bar makes solid contact, other end will drop. MAXIMUM drop = 7/8".
- On wooden frames, install strike plate on door jamb where adjusting rod makes contact.
- End cap with hexagon holes should be mounted to door at hinge side end to hold adjustment once set. Install as illustrated below with screws provided. Blank end cap may be installed at other end on single doors only, if desired.

DS344

Mortise application for metal doors



This product is designed to fit in a 3/4" deep channel in the bottom of a hollow metal door.

INSTALLATION INSTRUCTIONS

- Cut door bottom 1/8" less than inside length of door channel. DO NOT EXTEND DROP BAR WHILE CUTTING. Do not cut from end with adjusting rod. **Maximum cut door bottoms** 25" to 35" (635mm to 889mm) = 2" (51mm). 36" to 48" (914mm to 1219mm) = 4" (102mm). Up to 24" (610mm) = no cut.
- Drill 1/4" hole for adjusting rod in center of hinge edge of door 1/2" on center from bottom of door.
- Position door bottom in bottom of door and mark screw holes.
- Drill pilot holes for screws using 5/64" drill bit.
- Install with screws provided.
- Set adjusting rod for proper seal. To reduce drop, turn adjusting rod right; to increase drop turn left. Maximum drop = 1/2". CAUTION: When adjustment reaches maximum drop, rod will stop turning easily. Do not force beyond maximum 1/2" drop or damage will occur and void warranty.